

Proposition 28: An Overview for Educators



2024 CMEA Bay Section Fall Conference
Friday, November 15, 2024 ~ 8:30 A.M.
Student Union Room 1

Artspiration@SCCOE



Dr. Sofia Fojas
Arts Coordinator

- The SCCOE Arts Initiative
- CISC Arts Region 5 Arts Lead
- ArtsEdConnect Teacher Grant
- Technical Assistance to Districts
- Young Artist Showcase
- *¡Viva el mariachi!* Showcase
- Arts Professional Learning

Artspiration Goals

Connect

Connect – To Artspiration.

Strategize

Strategize – Leverage your role and networks on the Leadership Council to foster an equitable and transformative arts education in Santa Clara County.

Identify

Identify – What individual actions can you take toward the common goal of a sustainable arts education?

Welcome!



Who is in the room?

- Your name, your role and organization/school

What are the Basics of Prop 28?

- P28 is **supplemental** funding. It may not be used to **supplant** existing funding.
- Allocation of Funds:
 - 80% **MUST** pay for Classified & Certificated Staff
 - 20% **CAN** be used for Arts Ed Programs
 - Exemptions and waivers
- Each year of funds has a 3-year expenditure timeframe
- LEAs do not have to apply for funds, but they are to allocate them to school sites.

What is Prop 28?

The Arts and Music in Schools—Funding Guarantee and Accountability Act is a Change to the Constitution passed by the voters

- **NOT** a grant (not to be confused with the one-time Arts, Music, & Instructional Materials Discretionary Block Grant)
- **NOT** legislation
- **NOT** subject to yearly education budget negotiations



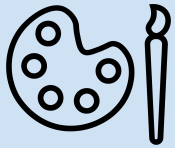
Who Qualifies and Benefits

- In total, about 6 million P-12 students will benefit from Arts and Music in Schools (Prop 28).
- Schools do not need to apply for funds are calculated based on enrollment in P-12 public schools (including charter schools), State Special Schools, and eligible preschools.

What Qualifies As Appropriate Expenditures?



Arts education programming: including, but not limited to, instruction and training, supplies, materials, and arts education partnerships for instruction in the 5 arts content areas: dance, media arts, music, theatre, and visual arts.



Funds Distribution

- First funding associated with Proposition 28 was provided in the 2023-24 school year.
- Funding is ongoing and annual, meaning eligible **schools** will receive Arts and Music in Schools (Prop 28) funding every year with no ending.



Funding Amount

- Arts and Music in Schools (Prop 28) guarantees an additional 1 percent of what local educational agencies (LEAs) receive for kindergarten through grade twelve education funding from the state to supplement arts and music programs at public schools. For 2024-25, this is \$907 million.
- LEAs with 500 or more students must spend 80 percent on Arts and Music staffing.

Funding - FAQ#4

Fiscal Year	Total Appropriation	Per Enrollment Grant Amount	Per FRPM Grant Amount
2023-24	\$938 million	\$110.51	\$78.42
2024-25	\$907 million	TBD	TBD

**Site Allocations for
Santa Clara County
Schools**





Site Expenditure Plans

For each school site or state preschool, the principal (or program director) shall develop a site expenditure plan. The district develops its own template and encourages a community process for decision-making by the school site.

Expenditure Restrictions - FAQ#13

- LEAs with an enrollment of 500+ must spend:
 - 80%+ on staffing (certificated/classified)
 - Up to 20% on PL, materials, contract
 - Up to 1% on administrative costs (LEA)
- site expenditure plans
- annual plan (LEA)

Staffing - FAQ#14

Are community partners hired as independent contractors/vendors considered 'staff', falling under the 80%? (07.15.2024)

Time and Location

FAQ#15: After-School and Off-campus Settings

- Allowable as long as the funds are used for arts education programming
- Please review reporting and certification requirements
- Know attendance accounting and instructional time requirements

Financial Requirements

FAQ #17 Financial and Audit Requirements

LEAs (not school sites) shall:

- Arts education programs
- Supplemental funding
- 1 percent of funds LEA's administrative expenses;
- Submit an annual board- or body-approved report posted on the LEA's and (CDE's) internet websites

What is an LEA?

FAQ#19: What is a local educational agency for the purposes of Arts and Music in Schools?

- A TK-grade 12 school district;
- County office of education;
- charter school;
- California School for the Blind and California School for the Deaf, Fremont; California School for the Deaf, Riverside

Pooling Funds/Reallocating Funds

FAQ #21 (pool): Yes, schools can share teachers and teacher aides as well as community arts partners as long as the allocation from one school site is not being used to pay for the cost of arts education programs at another school site.

FAQ #22 (reallocate): No. The language in the statute specifies that funds must be allocated to each school site in the amount calculated by California Department of Education. Statute does not provide for the reallocation of funds from one school site to another under any circumstances.

Accountability - FAQ#23

1. School Site Expenditure Plan
2. District-Level Annual Report
3. Annual Certification
4. Expenditure Report
5. Auditing

Source: <https://www.cde.ca.gov/eo/in/prop28artsandmusicedfundingfaq.asp>

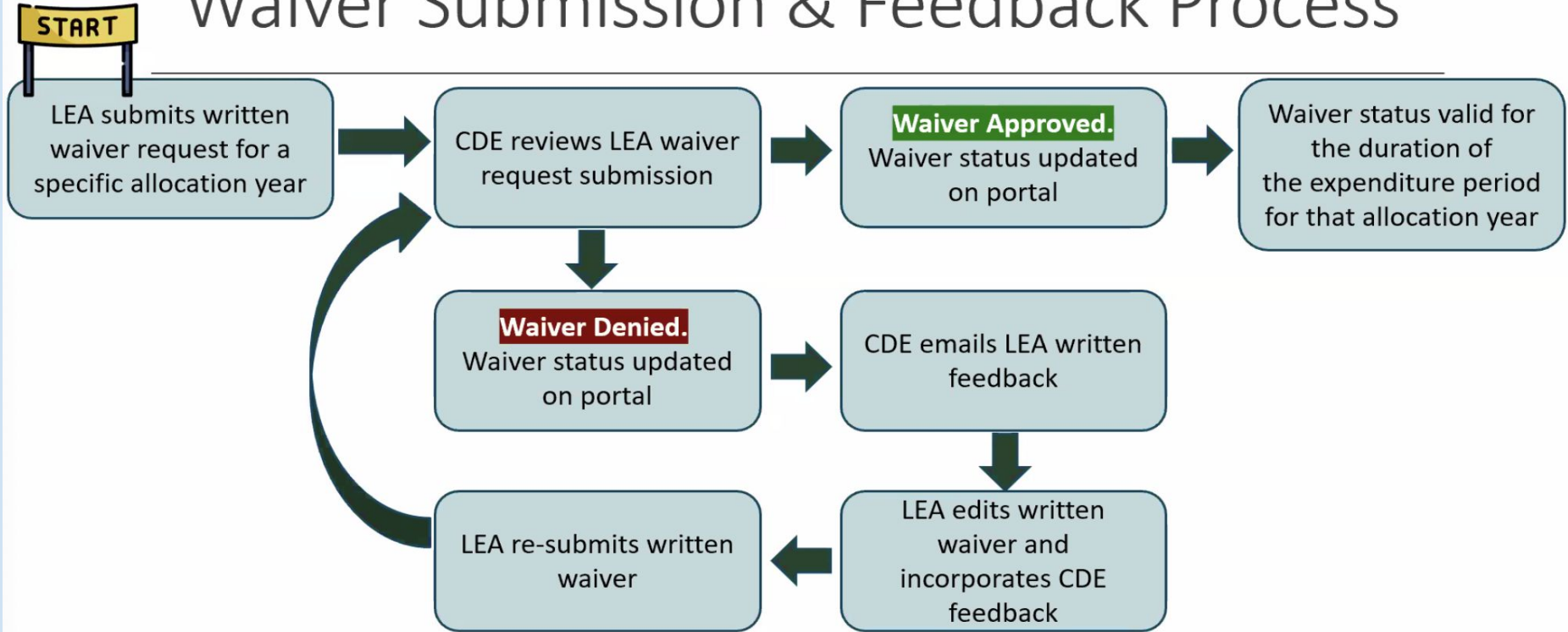
Waiver Process

FAQ#34

- EC Chapter 5.1, Section 8820, subsection (h) states that the CDE may, for good cause shown, provide a waiver to exempt them from EC Chapter 5.1, Section 8820, subsection (g).
- Applies to the entire LEA within a single (3-year) expenditure period.(FAQ #34)

Source: <https://www.cde.ca.gov/eo/in/prop28artsandmusicedfundingfaq.asp>

Waiver Submission & Feedback Process





How To Prepare - 1

Participate in Local Program Inventories

What is already offered?

How can you supplement these existing programs?

How To Prepare - 2

Research New Job Opportunities

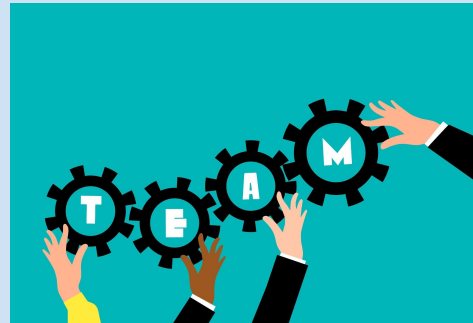
Update resumes, certificates, job descriptions or credentials as new educators and contractors are needed.



How To Prepare - 3

Outreach and Local Partnerships

Help bridge schools with local businesses and artists to facilitate authentic collaboration.



How To Prepare - 4

Know the California Arts Standards and Framework

These documents provide best teaching practices in dance, media arts, music, theatre, and visual art (adopted in 2019 and 2020 by the State Board of Education).



SRI Policy Brief:

What California Arts and Music in Schools Act Means for the Arts Teacher Workforce

Recommendations for districts and COEs

- including workforce development in arts plans
- Leveraging existing teacher workforce
- Teacher pathways for students
- Explore CTE certification



Additional Resources

- Proposition 28—Arts and Music in Schools Web Page: [Proposition 28: Arts and Music in Schools Program - Principal Apportionment \(CA Dept of Education\)](#)
- Proposition 28—Arts and Music in Schools Funding [Proposition 28—Arts and Music in Schools Funding - Transforming Schools: Superintendent's Initiatives \(CA Dept of Education\)](#)
- Proposition 28—Arts and Music in Schools FAQs [Proposition 28—Arts and Music in Schools FAQs - Transforming Schools: Superintendent's Initiatives \(CA Dept of Education\)](#)
- Proposition 28—Arts and Music in Schools Statute: [Codes Display Text](#)
- California Arts Standards for Public Schools, Prekindergarten Through Grade Twelve <https://www.cde.ca.gov/be/st/ss/vapacontentstds.asp>
- California Arts Framework: <https://www.calartsedframework.org/>



Connect with *Artspiration!*

- Social Media



- Monthly newsletters
- Website: www.Artspiration.sccoe.org
- Email: sfojas@sccoe.org
- ArtsEdConnect Educator Grant Email:
Artsedconnectgrant@sccoe.org

